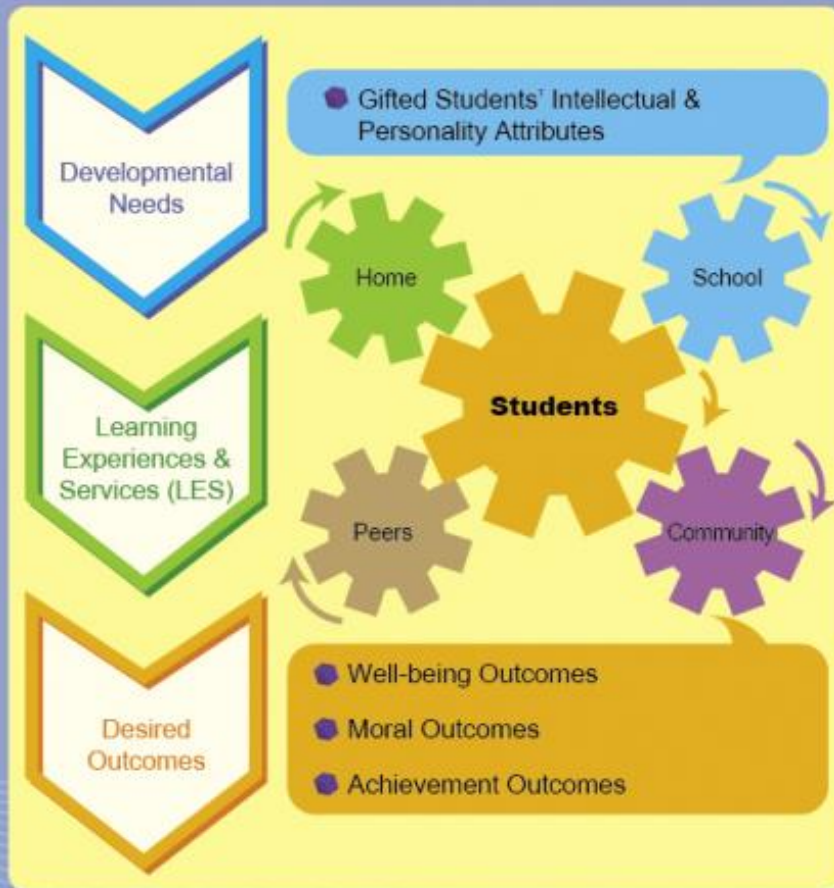




Affective Education Framework



Common Core Programmes for Primary Students

- Compulsory whole-day workshop
- Parent-Child Parallel Programme

Other Learning Experiences & Services

- Seminars / Sharing sessions
- Workshops
- Parent-Child Parallel Group
- Career Planning Series (with the Project CLAP for Youth @ JC)
- Service Learning
- Experiential Learning

Individual care, counselling and case conference with parents and other stakeholders