

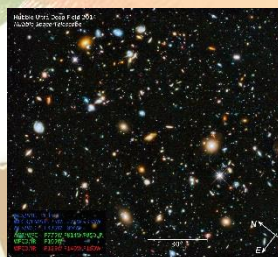


EXPLORING THE THREE FRONTIERS OF THE UNIVERSE (SCIT2301)

Introduction

How did the universe begin? How will it end? What are the fundamental rules that govern the evolution of the universe? To answer questions like these – some of the most important ones in science and philosophy – scientists have gone to the extremes to study various unusual phenomena.

The speaker will briefly introduce on-going efforts and recent accomplishments in Cosmology, Elementary Particle Physics, and Gravitational-wave Astrophysics. He will explain how discoveries in these apparently different fields foster advances in each other, and how recent breakthroughs open up opportunities for new discoveries in the coming years.



Programme Type

Intermediate Talk in Astronomy

Speaker

Professor Ming-chung Chu obtained his B.Sc. and PhD degrees both at California Institute of Technology (Caltech). He held research positions at MIT and Caltech before joining the Chinese University of Hong Kong in 1995, where he is currently a full professor in physics.

He is a co-founder of the Daya Bay Reactor Neutrino Experiment and the leader of the Hong Kong ATLAS group that carries out experiments at the Large Hadron Collider at CERN. His current research interest includes astrophysics, cosmology, and particle physics.

Target Participants



- S4 – S6 HKAGE student members only
 - Class size: 40
- * *First-come, first-served*

Language



Cantonese

Application Deadline **6 March 2018**

Schedule



Date	10 March 2018 (Saturday)
Time	3:45 p.m. - 5:00 p.m. (Please arrive at 3:30 p.m. for registration)
Venue	Multiple Purpose Teaching Room, 1/F Buddhist Kok Kwong Secondary School

Enquiries



For enquiries, please contact us at 3940 0102.