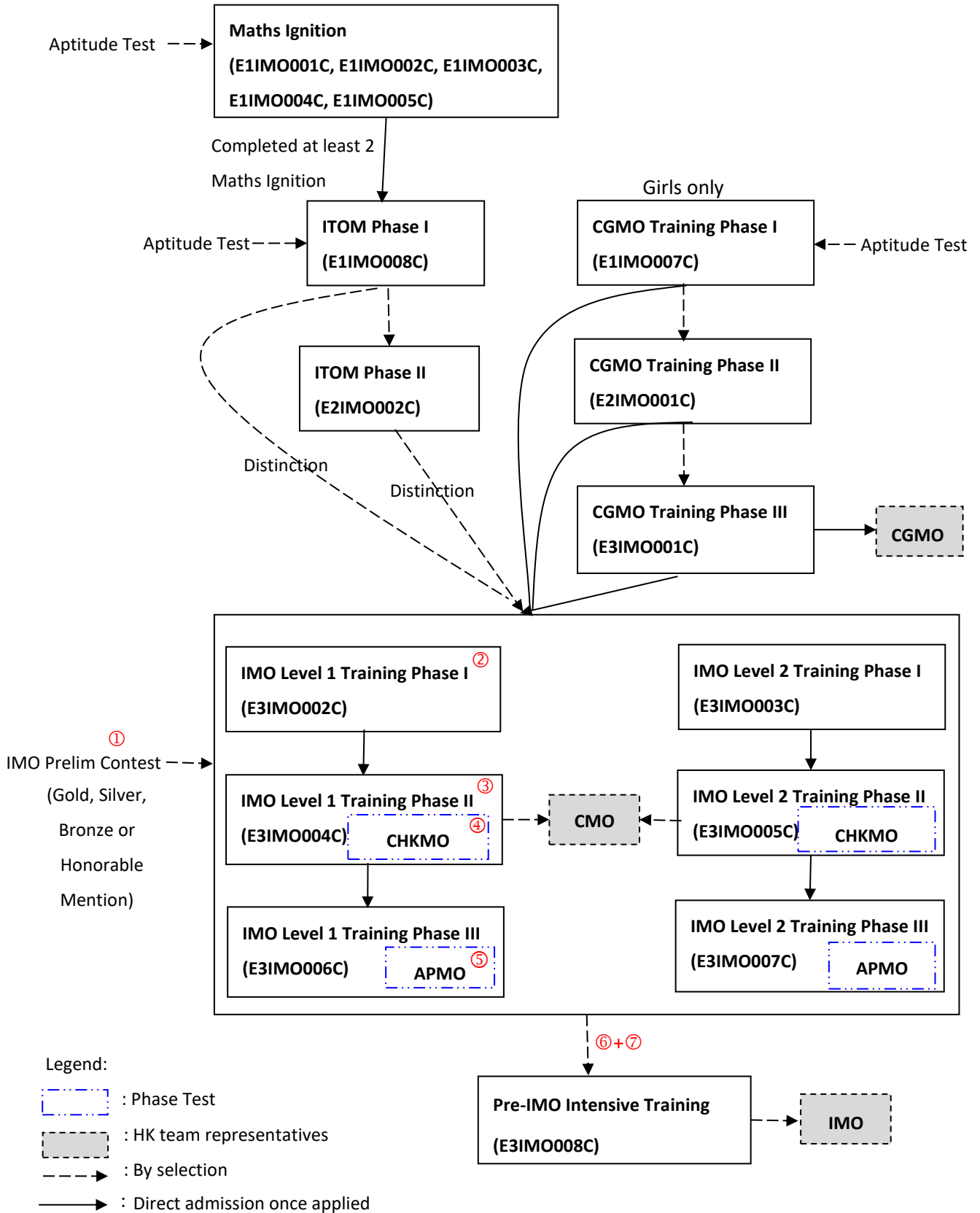


## International Mathematical Olympiad Related Programmes



**Remarks:**

ITOM – Introduction to Olympiad Mathematics  
 CGMO – China Girl’s Mathematical Olympiad  
 IMO – International Mathematical Olympiad

CHKMO – Hong Kong (China) Mathematical Olympiad  
 CMO – Chinese Mathematical Olympiad  
 APMO – Asian Pacific Mathematics Olympiad

IMO HK Team representatives are selected based on their performance in the assessments from ① through ⑦

# IMPORTANT information for International Mathematical Olympiad (IMO) Training

<b>Phase Trainings</b>			
<b>Eligibility</b>			
<ul style="list-style-type: none"> <li>● IMO Preliminary Selection Contest awardees ① or</li> <li>● Student members who have been a trainee in any phase of the IMO Training or</li> <li>● Student members who have completed any phase of CGMO Training or</li> <li>● Student members who have completed any phase of ITOM Training with Distinction</li> </ul>			
Training /Competition	Content	Excepted Schedule	Remark
<b>Phase I Training</b>	13 x 3-hr lessons	Jul - Aug	
	Test 1 ② 3 hr, 6 proof problems	Aug	✧ Phase test ✧ No make-up test
<b>Phase II Training</b>	17 x 3-hr lessons	Sep - Dec	
	Test 2 ③ 3 hr, 4 proof problems	Oct	✧ Phase test ✧ No make-up test
	CHKMO ④ 3 hr, 4 proof problems	Dec	✧ Phase test ✧ No make-up tests
<b>CMO</b>	2 days x 4.5 hr, 3 proof problems	Dec or Jan	6# students selected based on Prelim ①, Test 1 ②, and Test 2 ③
<b>Phase III Training</b>	8 x 3-hr lessons	Jan - Mar	
	APMO ⑤ 4 hr, 5 proof problems	Mar	✧ End-of-phase test ✧ No make-up test
<b>Selection Tests for Pre-IMO Intensive Training</b>	Test 3 ⑥ 4.5 hr, 3 proof problems Test 4 ⑦ 4.5 hr, 3 proof problems	Apr or May	18 students selected based on Prelim ①, Test 1 ②, Test 2 ③, CHKMO ④ and APMO ⑤  ✧ No make-up tests
<b>Pre-IMO Intensive Training</b>	IMO HK Team (6 students) & Alternate Team (6 students),		12 students selected based on Prelim ①, Test 1 ②, Test 2 ③, CHKMO ④, APMO ⑤, Test 3 ⑥ and Test 4 ⑦
<b>IMO</b>	2 days x 4.5 hr, 3 proof problems @		IMO HK Team
<b>CGMO</b>	2 days x 4 hr, 4 proof problems @		8# female students selected via CGMO Training (NOT IMO Training)

# Subject to change. May vary from year to year.

IMO HK Team representatives are selected based on their performance in the assessments from ① through ⑧

## Useful websites

IMO official website:	<a href="http://www.imo-official.org">www.imo-official.org</a>
IMO 2017 website:	<a href="http://www.imo2017.org.br/">http://www.imo2017.org.br/</a>
Art of Problem Solving:	<a href="http://www.artofproblemsolving.com">www.artofproblemsolving.com</a>
Mathematical Database:	<a href="http://www.mathdb.org">www.mathdb.org</a>
IMO 2016 Facebook page:	<a href="https://www.facebook.com/imo2016">www.facebook.com/imo2016</a>
IMO 2016 newsletter IMOment:	<a href="http://www.edb.gov.hk/tc/curriculum-development/kla/ma/IMO/IMOment.html">www.edb.gov.hk/tc/curriculum-development/kla/ma/IMO/IMOment.html</a>
Mathematical Excalibur:	<a href="http://www.math.ust.hk/excalibur/">www.math.ust.hk/excalibur/</a>
reference list recommended by IMOHKC	<a href="https://docs.google.com/spreadsheets/d/1I4GNYbY2eDPPKCnD4lpnYuqNenJV0-3NgKUMDh6m5ow/edit?usp=sharing">https://docs.google.com/spreadsheets/d/1I4GNYbY2eDPPKCnD4lpnYuqNenJV0-3NgKUMDh6m5ow/edit?usp=sharing</a>