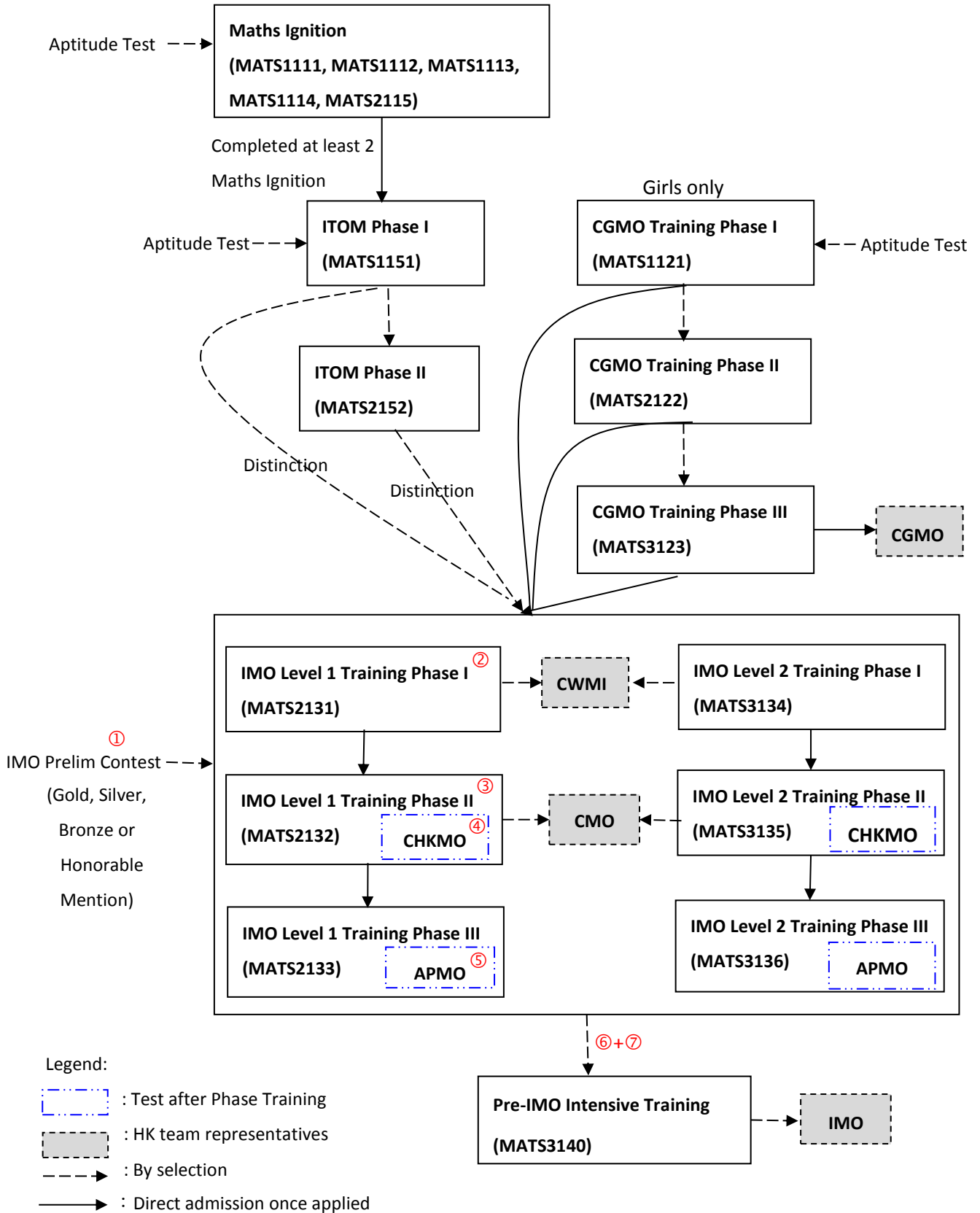


International Mathematical Olympiad Related Programmes



Remarks:

ITOM – Introduction to Olympiad Mathematics
 CGMO – China Girl’s Mathematical Olympiad
 IMO – International Mathematical Olympiad
 CWMI – China Western Mathematical Invitation

CHKMO – Hong Kong (China) Mathematical Olympiad
 CMO – Chinese Mathematical Olympiad
 APMO – Asian Pacific Mathematics Olympiad

IMO HK Team representatives are selected based on their performance in the assessments from ① through ⑦

IMPORTANT information for International Mathematical Olympiad (IMO) Training

Phase Trainings				
Eligibility				
<ul style="list-style-type: none"> ● IMO Preliminary Selection Contest awardees ① or ● Student members who have been a trainee in any phase of the IMO Training or ● Student members who have completed any phase of CGMO Training or ● Student members who have completed any phase of ITOM Training with Distinction 				
Training /Competition	Content		Excepted Schedule	Remark
	Level 1	Level 2		
Phase I Training	13 x 3-hr lessons	6 x 3-hr lessons	Jul - Aug	
	Test 1 ② 3 hr, 6 proof problems		Aug	✧ End-of-phase test ✧ No make-up tests
Phase II Training	10 x 3-hour lessons	10 x 3-hr lessons	Sep - Dec	
	Test 2 ③ 3 hr, 4 proof problems		Oct	✧ Phase test ✧ No make-up tests
	CHKMO ④ 3 hr, 4 proof problems		Dec	✧ End-of-phase test ✧ No make-up tests
CMO	2 days x 4.5 hr, 3 proof problems		Dec or Jan	6# students selected based on Prelim ① , Test 1 ② and Test 2 ③
Phase III Training	8 x 3-hr lessons	8 x 3-hr lessons	Jan - Mar	
	APMO ⑤ 4 hr, 5 proof problems		Mar	✧ End-of-phase test ✧ No make-up tests
Selection Tests for Pre-IMO Intensive Training	Test 3 ⑥ 4.5 hr, 3 proof problems		Apr or May	18 students selected based on Prelim ① , Test 1 ② , Test 2 ③ , CHKMO ④ and APMO ⑤ ✧ No make-up tests
	Test 4 ⑦ 4.5 hr, 3 proof problems			
Pre-IMO Intensive Training	IMO HK Team (6 students) & Alternate Team (6 students),			12 students selected based on Prelim ① , Test 1 ② , Test 2 ③ , CHKMO ④ , APMO ⑤ , Test 3 ⑥ and Test 4 ⑦
IMO	2 days x 4.5 hours, 3 proof problems @			IMO HK Team
CWMI	2 days x 4 hours, 4 proof problems @			4# students selected based on Prelim ① , Test 1 ② , Test 2 ③ , CHKMO ④ and APMO ⑤
CGMO	2 days x 4 hours, 4 proof problems @			8# female students selected via CGMO training (NOT IMO Training)

Subject to change. May vary from year to year.

IMO HK Team representatives are selected based on their performance in the assessments from ① through ⑦

Useful websites

IMO official website:	www.imo-official.org
IMO 2017 website:	http://www.imo2017.org.br/
Art of Problem Solving:	www.artofproblemsolving.com
Mathematical Database:	www.mathdb.org
IMO 2016 Facebook page:	www.facebook.com/imo2016
IMO 2016 newsletter IMOment:	www.edb.gov.hk/tc/curriculum-development/kla/ma/IMO/IMOment.html
Mathematical Excalibur:	www.math.ust.hk/excalibur/
reference list recommended by IMOHKC	https://docs.google.com/spreadsheets/d/1I4GNYbY2eDPPKCnD4IpnYuqNenJV0-3NgKUMDh6m5ow/edit?usp=sharing