

數學科網上學習課程 – Java 更新後不能開啟幾何學繪圖功能 (13/10/2017)

(After Java is updated to the latest version, drawing function in Geometry topics cannot operate.)

軟件平台(Software Platform): Windows 7 + IE 10 + Java Version 7 Update 51 or newer

1. 如現在的 Java 版本能順利開啟數學科幾何學的繪圖功能，請儘量不要更新。

(If your Java version allows smooth operation in drawing function in Geometry of Mathematics webcourse, please **KEEP the existing Java version** and **DO NOT** perform the Java **update** whenever possible.)

代數

1. 算術挑戰
2. 算術基礎
3. 一元方程
4. 二元方程組
5. 其他應用
6. 第六章 代數史漫談 (第11課)

數論

1. 古埃及記數系統
2. 巴比倫記數系統
3. 瑪雅和印度-阿拉伯記數系統
4. 其他古文明的記數系統
5. 其他的記數系統

幾何學

1. 歐幾里德幾何學
2. 三角形
3. 多邊形

課程階段

三角形

三角形是由三條直線圍成的圖形。

1. 等腰三角形是有兩條邊長度相等的三角形。
2. 等邊三角形是各邊長度均相等的三角形。
3. 直角三角形是一內角為直角的三角形。
4. 鈍角三角形是一內角為鈍角的三角形。
5. 銳角三角形是各角均為銳角的三角形。

等腰三角形 (Isosceles triangle), 等邊三角形 (Equilateral triangle), 直角三角形 (Right-angled triangle), 鈍角三角形 (Obtuse-angled triangle), 銳角三角形 (Acute-angled triangle)

繪圖視窗(幾何學)
Drawing windows
(Geometry)

2. 如需安裝或更新 Java 版本，請跟隨以下步驟(2-10)。首先到 Java 主頁安裝最新版本。

(If you need to install or upgrade the existing Java version, please follow the steps 2-10 below. Firstly, visit the Java main page to install the updated version of Java.)

URL: <https://java.com/en/download/manual.jsp>

*請使用(Please use): **Version 7 Update 51** 或**更新版本 (32 bit)**, 某些較舊版本例如 Version 7 Update 45 不支援步驟 5-9 的功能。

(Some version like Version 7 Update 45 does not support the procedures in Steps 5-9.)

Enter:
<https://java.com/en/download/manual.jsp>

Java Downloads for All Operating Systems

Recommended Version 8 Update 144
Release date July 26, 2017

Select the file according to your operating system from the list below to get the latest Java for your computer.

> Remove Older Versions > What is Java?

By downloading Java you acknowledge that you have read and accepted the terms of the [end user license agreement](#)

Windows Which should I choose?

Operating System	File Size	Instructions
Windows Online		After installing Java, you may need to restart your browser in order to enable Java in your browser.
Windows Offline	file size: 54.57 MB	
Windows Offline (64-bit)	file size: 62.34 MB	

If you use 32-bit and 64-bit browsers interchangeably, you will need to install both 32-bit and 64-bit Java in order to have the Java plug-in for both browsers. > [FAQ about 64-bit Java for Windows](#)

For Mac OS X:

Enter:

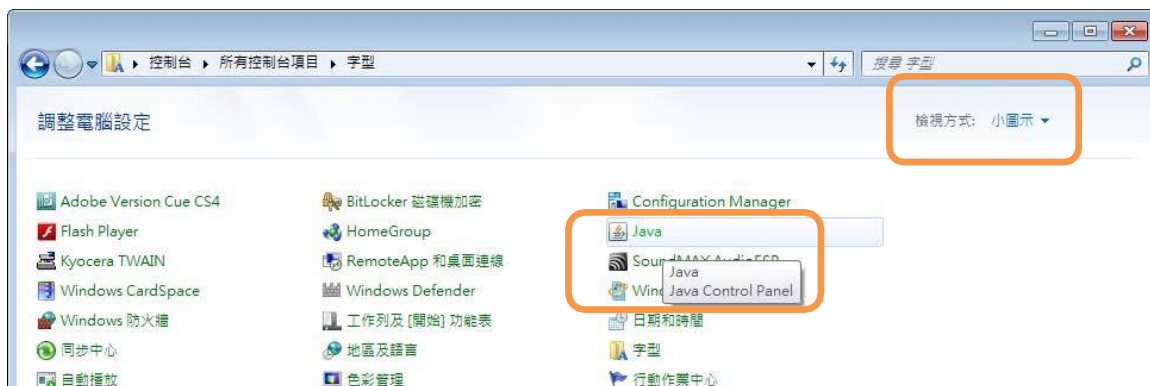
<https://java.com/en/download/manual.jsp>

The screenshot shows the Java download page for Mac OS X. The browser address bar displays <https://java.com/en/download/manual.jsp>. The page title is "Mac OS X" and "Mac FAQ". The main content area lists the "Mac OS X (10.7.3 version and above)" download with a file size of 63.94 MB and a link to "Instructions". Below this, there is a note: "* Oracle Java (Version 7 and later versions) requires an Intel-based Mac running Mac OS X 10.7.3 (Lion) or later and administrator privileges for installation. > [More information](#)". The page also lists download options for Linux and Solaris, each with their respective file sizes and links to instructions.

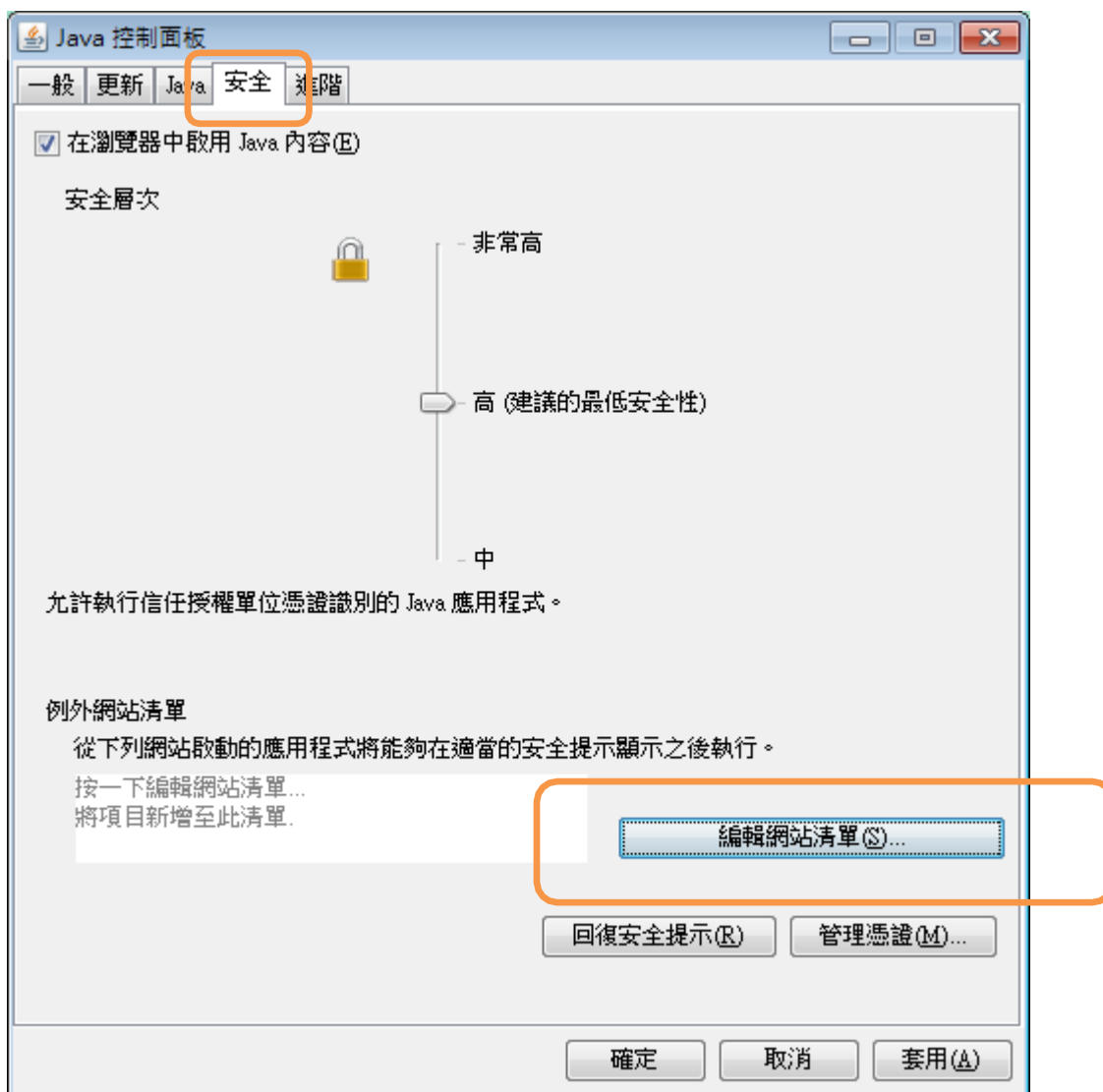
3. 安裝最新 Java 版本後，將不能開啟附有繪圖功能的幾何學網頁，及會出現以下錯誤訊息。
(After the updated version of Java has been installed, you should have problem in opening the drawing function in Geometry. And you will see the following error messages.)



4. 開啟 Windows 7 (或其他 Windows 版本)的「控制台」,如有需要以「小圖示」方式檢視,選擇「Java」。(Open the “Control Panel” of Windows 7 / other Windows version. If necessary, view by “Small Icons” and choose “Java”.)



5. 在「Java 控制面板」,選第四頁「安全」。再選「編輯網站清單(S)」。(In “Java Control Panel”, choose the 4th tab “Security”. And choose “Edit Site List...”.)



6. 在「例外網站清單」，選「新增(A)」。

In "Exception Site List", choose "Add".



7. 在「例外網站清單」，在「位置」下的空白位置填上 <https://hkage.org.hk/webbasedlearning/learningcourse/>。然後按「新增」，再按「確定」。

(In "Exception Site List", enter <https://hkage.org.hk/webbasedlearning/learningcourse/> to the space provided. Click "Add" and then "OK".)

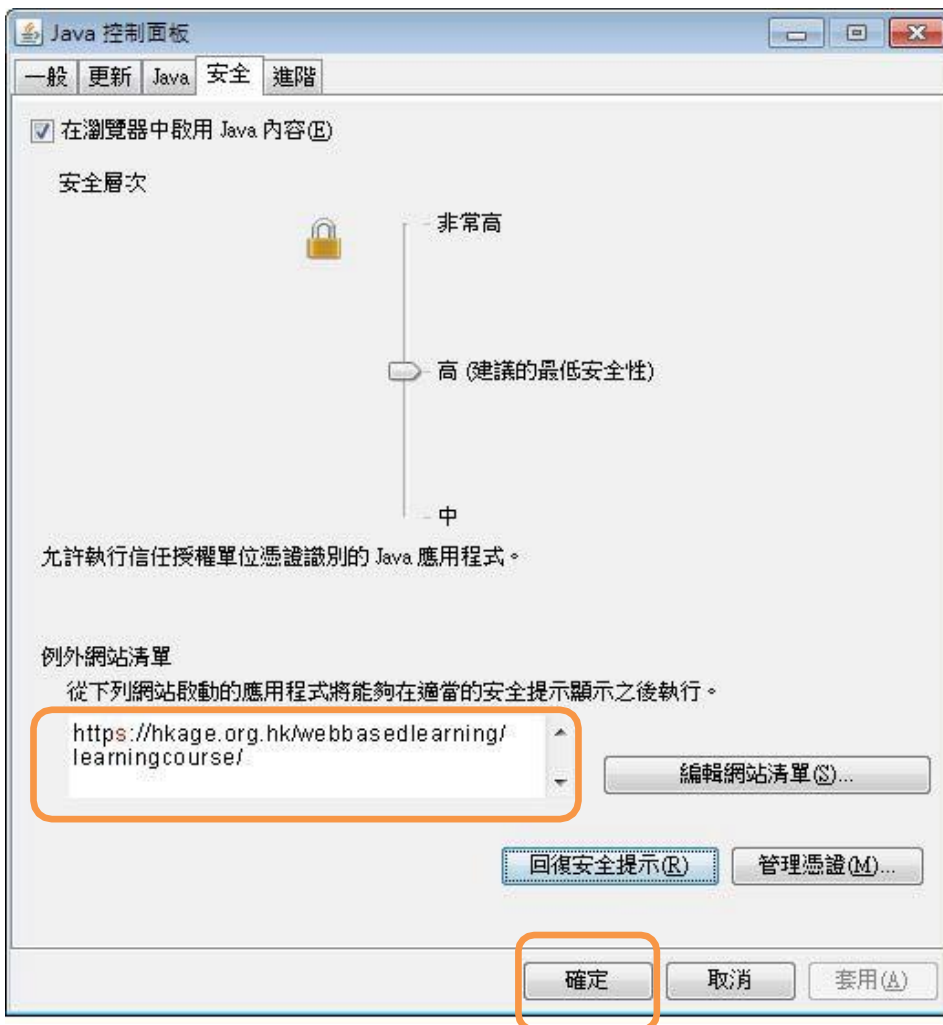
*如電腦配置是**Window 10**，請再次在「例外網站清單」的空白位置填上 <http://hkage.org.hk>，然後按「新增」，再按「確定」。

(*If the computer configuration is **Window 10**, please ALSO enter <http://hkage.org.hk> to the space provided in "Exception Site List". Click "Add" and then "OK".)

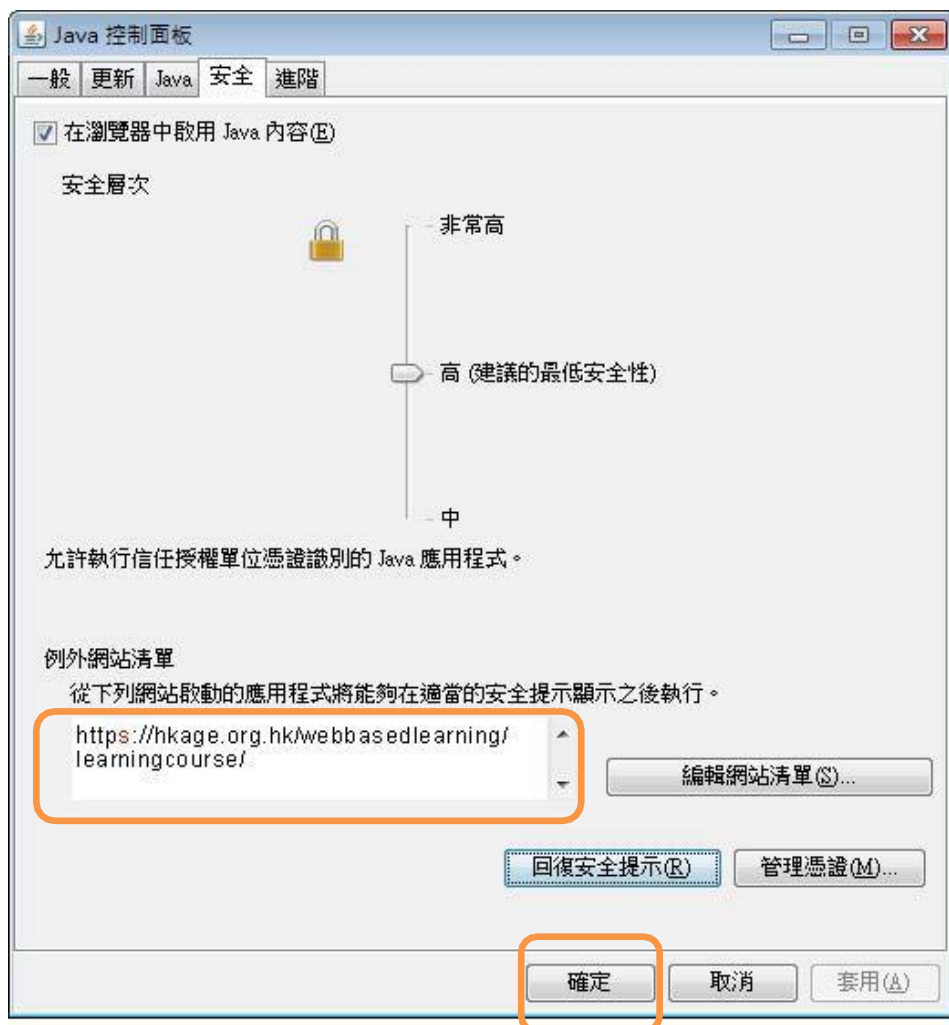




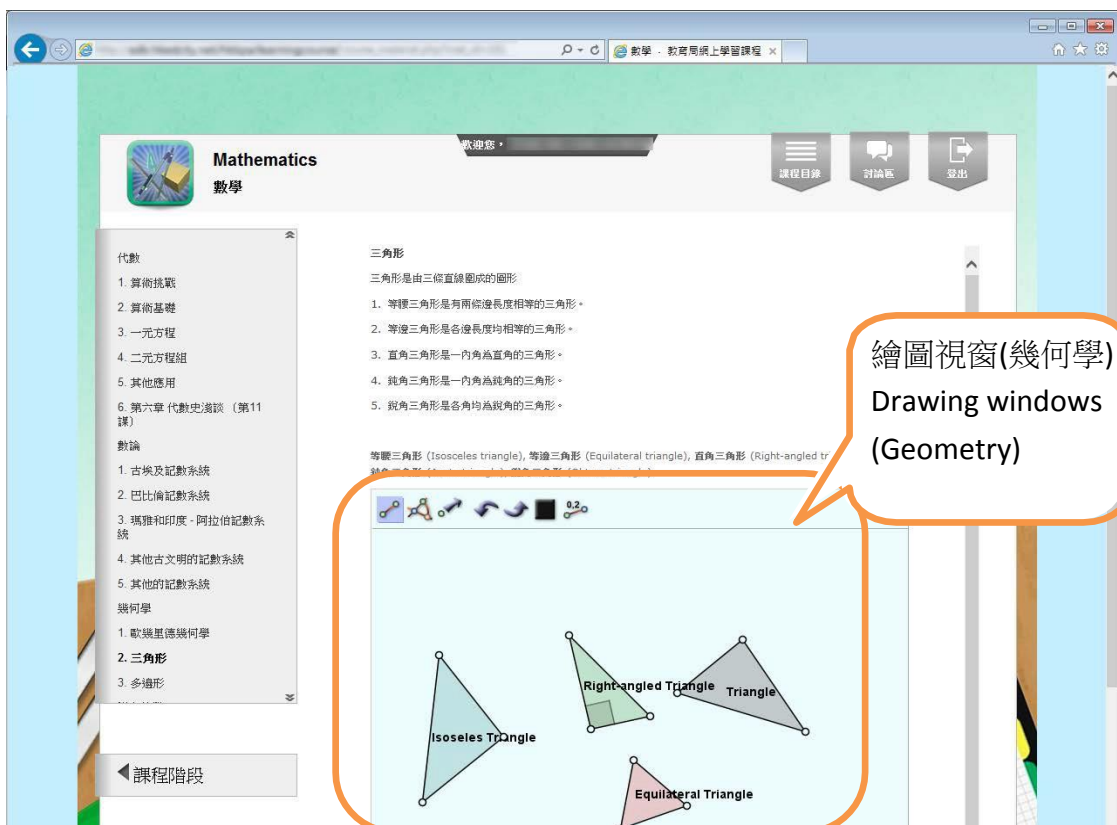
8. 回到「Java 控制面板」第四頁「安全」，查看及確認「例外網站清單」的內容。按「確定」。(Back to the 4th tab “Security” of “Java Control Panel”, please check the content of “Exceptional Site List”.) Click “OK”.



9. 回到「Java 控制面板」第四頁「安全」，查看及確認「例外網站清單」的內容。按「確定」。
(Back to the 4th tab “Security” of “Java Control Panel”, please check the content of “Exceptional Site List”.) Click “OK”.



10. 回到數學科網上學習課程幾何學網頁，按 F5 (重新載入網頁)。當出現「安全警告」時，按「執行」。幾秒鐘後，便可看到繪圖畫面。(Go back to the Geometry page of Mathematics webcourse, and press F5 key (to reload the web page). When you see a “Security Warning” dialog, click “Run”. You will see the Drawing Windows in a few seconds.)



*如電腦配置是 **Window 10**，建議學生使用 Internet Explorer，不建議使用 Microsoft edge
 (*If your computer configuration is **Window 10**, we recommend you to use Internet Explorer instead of Microsoft edge.)

** 完成! (Finished!) **