

**Hong Kong Academy of Gifted Education X Queen's College
Gifted Angels Service Learning Project 1718**

The IncrELDERbles

IncrELDERble Workshop

23rd Jul, 2018 (Monday)

9:30am - 4:30pm

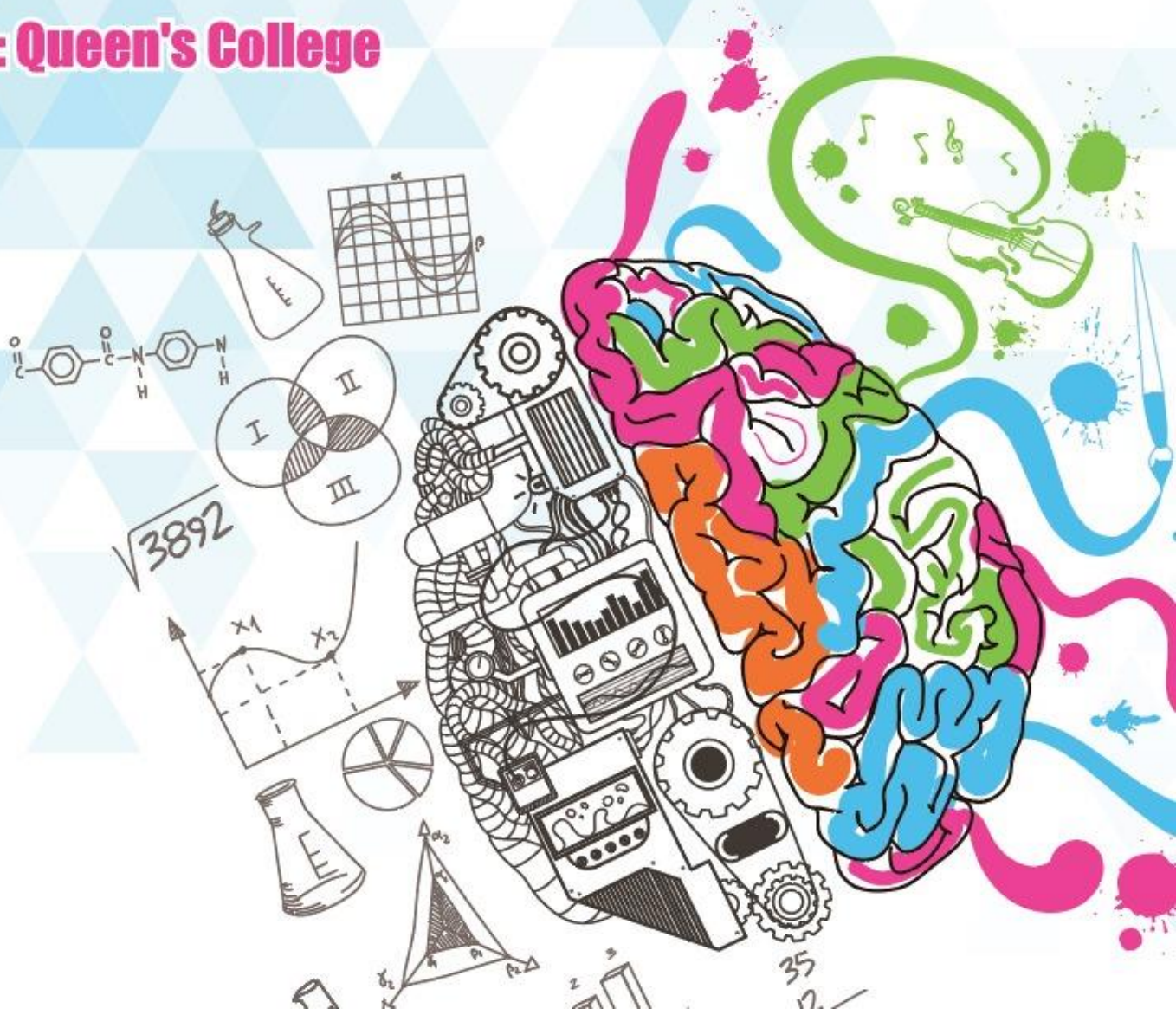
Venue: Queen's College

IncrELDERble Exhibition cum Prize Presentation Ceremony

24th Aug, 2018 (Friday)

9:30am - 3:30pm

Venue: Queen's College



The IncrELDERbles (APPS2531A)

Introduction

STEM is a curriculum developed in Hong Kong schools based on the philosophy to educate children in four specific disciplines -- Science, Technology, Engineering, and Mathematics. In the 21st century, scientific technologies and research methods are becoming increasingly crucial. Succeeding in this mode of information-based society not only requires basic understanding of technologies, but also capabilities of utilising them to further benefit our society. Accordingly, we organise this competition to advocate STEM education, arouse and strengthen students' interests and raise their standard in science, nurture young science talents for our society and mobilise Gifted Angels to serve the community with their talents, particularly the elderly group.

Programme Type / Level

Gifted Angels - Service Learning Project ([Token-required](#))

Target Participants



- S1 to S6 HKAGE student members in 2017/18 academic year only
- Class size: 32
- * *First-come, first-served*

Medium of Instruction



Cantonese

Certificate



E-Certificate will be awarded to participants who have:

- ❖ Attended **ALL** sessions AND
- ❖ Completed all the assignments with satisfactory performance

Intended Learning Outcomes



Upon completion of the programme, participants should be able:

1. To mobilise Gifted Angels to serve the community with their talents;
2. To advocate STEM education, arouse and strengthen students' interests and raise their standard in science, and to nurture young science talents for our society;
3. To strengthen students' creativity, innovative and practical skills in a bid to overcome challenges in the not too distant future;
4. To stimulate students' imagination in scientific research and invention, and to allow them to put their ideas into practice;
5. To provide an opportunity for students to showcase their scientific and innovative ideas..

Application Deadline

16 July 2018

領導才能

Schedule



Session	Date	Time	Activities	Venue
1	23 July	9:30 a.m. – 10:00 a.m.	Reception + Grouping	Queen's College ¹
		10:00 a.m. – 12:00 noon	Eldpathy Workshop	
		12:00 noon – 1:30 p.m.	Lunch ²	
		1:30 p.m. – 4:30 p.m.	Talk Writing of proposals and making of products	
24 July to 16 August: Brainstorm of Invention/writing up of proposal 17 August: Deadline for handing in proposal				
2	24 Aug	9:30 a.m. – 3:30 p.m. (Including lunch time ²)	IncrELDERbles Exhibition cum Prize Presentation Ceremony	Queen's College ¹

¹ Address: 120 Causeway Road, Causeway Bay, Hong Kong ([map](#))

² Remarks: Participants need to prepare their own lunch or bring a suitable amount of money to dine out in restaurants.

Enquiries



For enquiries, please contact us at 3940 0101.

LEADERSHIP

領導才能